

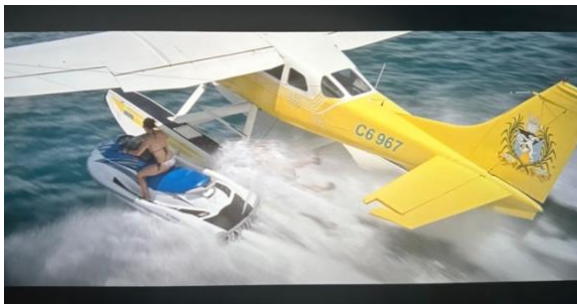
## Dale Fenters



This scene starts off the action sequence with Finn and Gemma riding a jet-ski with a medium shot to show the people in the frame. The shot has a deep focus, with eyeline levels matching.



In the shot it starts with an establishing shot to show that there is a plane they are riding along with Finn attempting to jump on the plane. You can see how it shows the sky in the top quadrant of the 3 vertical boxes



The next cut jumps to a long shot to show both the plane and jet-ski when Finn jumps onto the plane. The shot has deep focus to show everything is equally important in the shot. Has a high angle camera shot to get a good angle on the pontoon where Finn jumps to



This scene shows that Finn is on an adrenaline rush by the expression on his face and shows the depth of how he is lying on the pontoon with his hands closer to the camera. Has more focus on Finn while everything is behind him in a blur showing the speed of the plane.



This is another establishing shot introducing the character that is flying the plane Big Bunny. With a medium close-up shot showing his head and shoulders. Big Bunny has concern on his face as he is trying to take off.



This is a shot showing the plane from a front view of the plane heading towards a boat with other characters. Gives the audience a sense of fear with a plane heading towards you. Has the horizon in the center with a equivalent ratio of sea and sky.



They use a reverse long shot to show the boat with the other characters, and how it flew directly over the boat within a couple feet. Has deep focus to show everything in the shot is important.



An establishing shot is used in this next cut. It shows that now it is just Finn and Big Bunny in the air, and the following scene will be between the interactions of them



This shot is to setup the next couple cuts where it uses lots of shot reverse shots. The shot shows Big Bunny looking down towards the pontoon where Finn is holding in for dear life.



This shot is now a point of view shot of Big Bunny looking at Finn. It shows this using a high angle camera view showing that the power is held with Big Bunny in the scene. It is a long shot showing the hip up of Finn and his eye line is in the top section of the shot



The next shot shows the point of view angle of Finn looking up towards Big Bunny. It is a very quick cut but has a low angle looking up towards Big Bunny.



The producer uses an establishing shot here to show that Tess is unconscious in the plane and that she will be important in the next shots. Has deep focus with everything looking equivalent in the shot. Big Bunny is cocking a gun getting ready to take care of Finn.



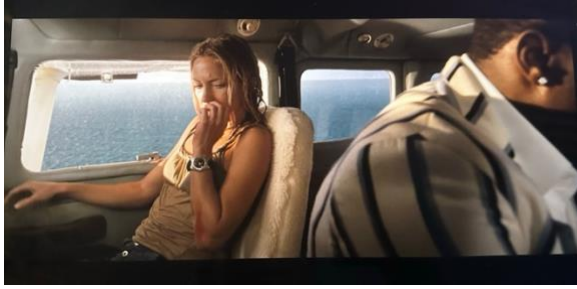
The low angle long shot shows that Big Bunny has the power in this shot while he is positioning himself to get ready to shoot. Camera is positioned back to show the full body of Finn making him be in a helpless position.



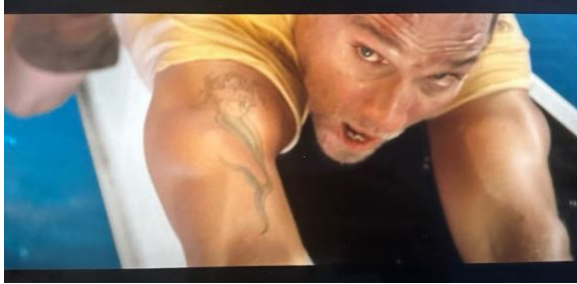
Tess wakes up with a medium close-up shot establishing that she is now awake and conscious. Has eyeline in the top third of the screen.



Another medium close-up shot shows that Big Bunny now has his gun pointed at Finn. Showing a point of view low angle shot where Finn is.



This is a medium long shot showing the spots of the characters in the plane. Tess coming out of being unconscious and a glimpse of Big Bunny looking behind the plane towards Finn with the gun pointed at him. Has deep focus where it shows how Big Bunny is also important.



The last shot is a point of view high angle close-up in the eyes of big bunny. Shows that Finn is scared by the expression on his face. The close up gives the viewer a more personal connection with Finn and the feelings he has.



Have nothing to say about this one just wanted to show he got booted out.